

The background of the entire page is a photograph of a wheat field. In the center, two hands are shown holding a large quantity of golden wheat grains. The image is overlaid with diagonal green and blue geometric shapes. The company logo is positioned in the top left, and the year '2021' is in the bottom right.

**A>KEREAL**  
>ROMANIA

**2021**



## Content

---

Axereal Group	3-4
Axereal Central Europe	5
Axereal Romania	6

### Our varieties

#### Wheat

Basilio	7
Filon	8
Complice	9
Euclide	10
Ortolan	11
Winner	12
Frenetic	13
Mutic	14
Concret	15

#### Barley

Multie	16
Laureate	17

#### Peas

Balltrap	18
Angellus	19
Javlo	20

#### Soybean

Betty	21
Avril	22

#### Flaxseed

Omegalin	23
Attila	24

### Our fertilizers

#### Foliar fertilizers

Axe Micro	25
Axe Multi	26
Axe Oil	27

# ABOUT US

## *Axereal* *A French international group*

### ***Axereal, at a glance***

Axereal is a leading agricultural and agri-food cooperative operating in France and internationally, growing cereals and specialised in the process for the malt, milling and livestock markets.

**Our mission:** to add value to the agricultural production of our region's farmers by developing sustainable and competitive industries and by creating value throughout the agri-food chain, from producers to consumers.

**Our ambition:** to contribute to the development of a quality food supply, by positioning ourselves as a major player in the agricultural transition.

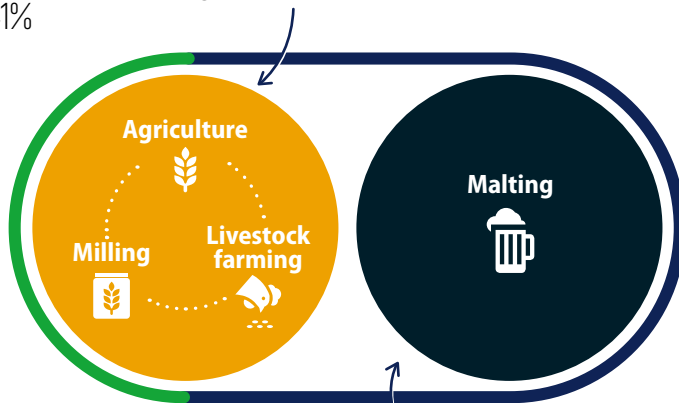


## COMPLEMENTARY ACTIVITIES COVERING THE ENTIRE AGRIFOOD CHAIN

We are present across the entire grain chain, from field to fork. Thanks to the sustainable, competitive channels we have created, we market some of the grain we originate unprocessed to artisans and manufacturers in France and abroad. We also process a large part of it ourselves, in our own facilities, to produce flour, malt or animal feed.

### Channels & agriculture

41%



#### Customer types

Farmers

Food industry

Malting  
59%



**AXEREA**  
AGRICULTURE

- > France's leading originator of sustainable agricultural raw materials
- > 4.5 Mt of grain originated



**BOORTMALT**  
AXEREA GROUP

- > World's largest maltster
- > 1,850 Mt of malt traded



**AXIANE**  
MEUNERIE

- > France's 3rd-largest miller
- > 475 kt of wheat milled

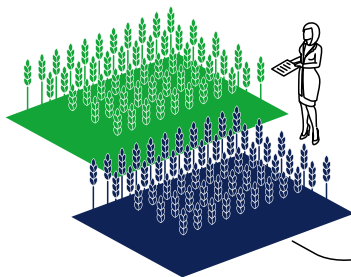


**AXEREA**  
ELEVAGE

- > Leading player in livestock farming
- > 460 kt of feed compound sales

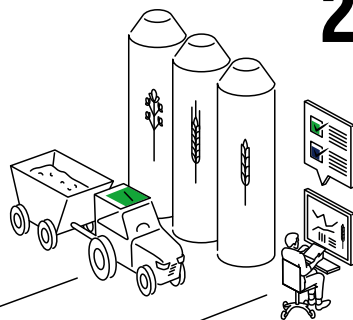
1

Seed propagation



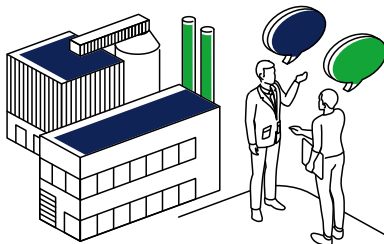
2

Production, origination,  
storage, trading & logistics



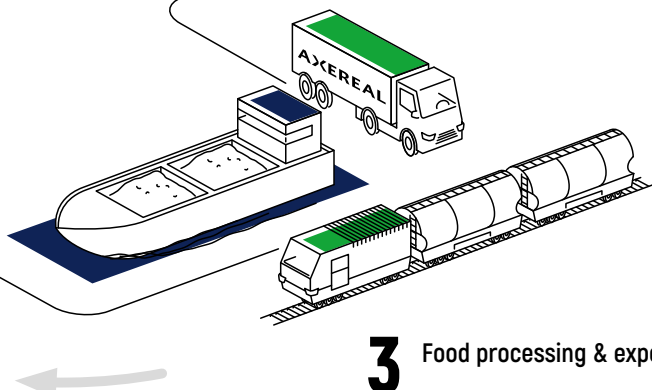
4

Customer relations & meeting  
consumer expectations



3

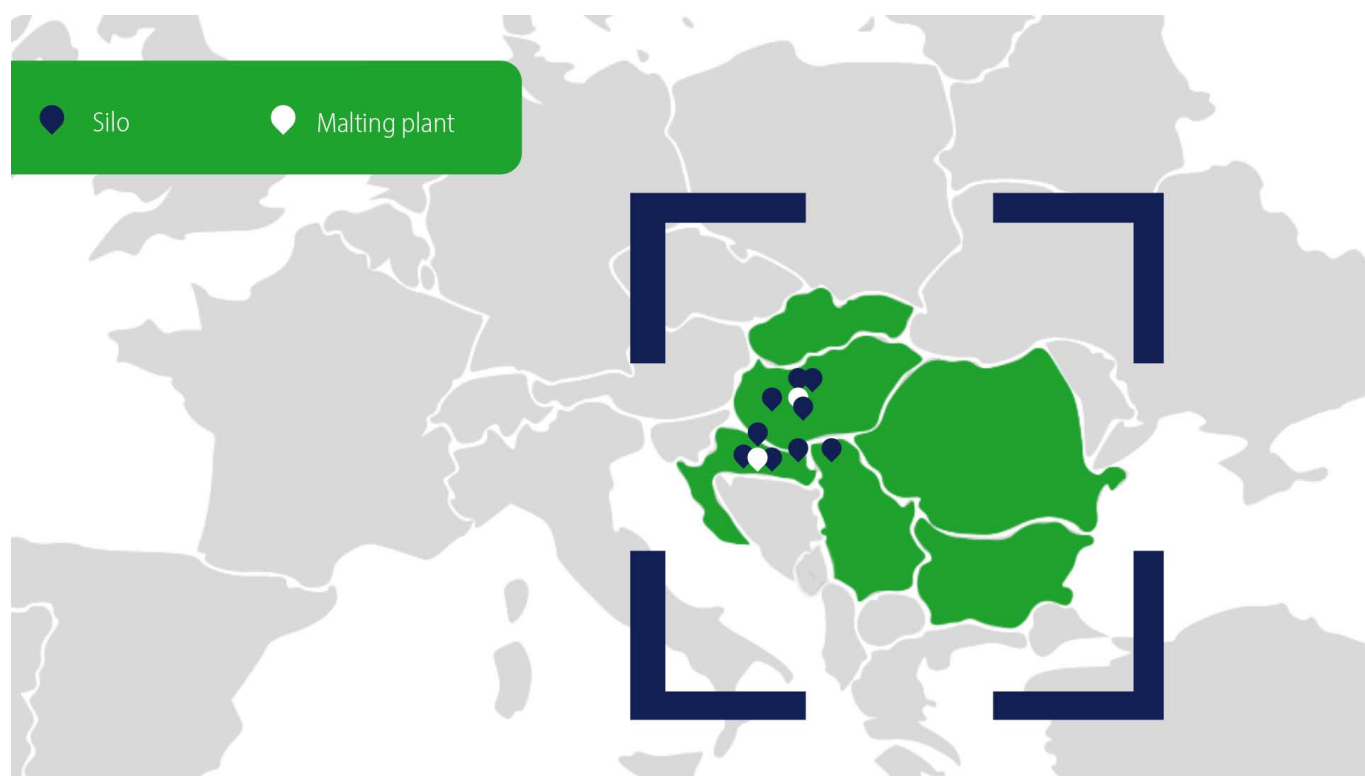
Food processing & export





## ***Axereal Central Europe, ensuring quality and high yields for the partners***

Axereal Central Europe was born in 2015 following the development of Axereal in the area. It covers 6 countries: Croatia, Hungary, Serbia, Romania, Bulgaria and Slovakia. With offices in each country, a seed multiplication farm, silos in Croatia, Hungary and Serbia, Axereal is well established in the local territory.



***To satisfy the European cereal market needs, Axereal takes part in the entire grain chain.***

From the selection and production of seeds to the selling of grain to agribusiness.

***Our activities are based on customer needs production to offer appropriate seeds.***

Each country of the zone is selling specific seeds, after being tested locally, to ensure quality and high yields for the partners.

## **Axereal Romania**

---

Axereal Romania is the Romanian branch of the largest agricultural cooperative in France.

We started our activity in 2011, initially in the western part of the country and later in the south and south-east, then in 2015 we joined Axereal Central Europe.

We are a young and ambitious team, growing every year with new specialists.

Together we want to achieve the most professional and profitable results, both for us and for our partners.

***In Romania, Axereal is one of the main suppliers of seeds material.***

---

At this time, Axereal Romania has a complete portfolio of:

- seeds from testing, multiplication and commercialization for cereals, leguminous and oilseed crops.
- foliar fertilizers: a complete range of foliar fertilizers to support your crop at exactly the right time.





## BASILIO

**EARLY MEGA  
PRODUCTION!**



### ADVANTAGES

- Autumn wheat variety with good production potential and stable yield.
- Excellent milling characteristics with very good baking indexes.
- High ecological plasticity.
- Yield potential: 8-10 t/ha



### AGRONOMIC CHARACTERISTICS

- Medium to small sized aristat,
- Very resistant to winter
- Maturity group: early;
- Excellent twinning ability.
- Optimum sowing period: 25.09 - 25.10;
- Sowing norm: low
- 380 - 400 bg/sqm;
- MMB: medium.



### DISEASE RESISTANCE

**Highly resistant to:**

- Fusarium (*Fusarium* spp.)
- Rust (*Puccinia* spp.)

**Good resistance to:**

- Powdery mildew (*Blumeria graminis*)



### QUALITATIVE INDICATORS

- Protein: 12.5 - 13.5 % ;
- Gluten: 28 - 30%;
- Grain hardness: good;
- MH: 78 - 81 kg/hl
- Hagberg index: 380 - 390;
- Zeleny index: 40 - 50 ml
- W (at 11% protein): 220
- P/L (at 11% protein): 0.45 - 0.50





## FILON

**THE TRUE GOLDEN SEAL!**



### ADVANTAGES

- Wheat variety with excellent yield potential;
- Stable yield;
- Superior bread wheat;
- Early variety



### AGRONOMIC CHARACTERISTICS

- Medium sized nearstat
- Very good resistance to Fuzarium;
- Very resistant to winter
- Optimum sowing period: 25.09 - 25.10;
- Sowing norm: 370-450 bg/mp;
- MMB: low to medium.



### DISEASE RESISTANCE

**Highly resistant to:**

- Powdery mildew (*Blumeria graminis*)
- Helminthosporiasis (*Drechslera tritici-repentis*)
- Septoria (*Septoria tritici*)
- Yellow rust (*Puccinia striiformis*)



### QUALITATIVE INDICATORS

- Protein: 13 - 15 %;
- Gluten: 25 - 35 %;
- Grain hardness: medium-hard;
- MH: 79 - 85 kg/hl
- Zeleny index: 25 - 35 ml
- W (at 11% protein) : 130 - 185
- P/L (at 11% protein) : 1.40 - 3.40





## COMPLICE

YOUR ACCOMPLICE TO PROFIT



### ADVANTAGES

- Autumn wheat with very high yield potential;
- Stable yield;
- Superior bread wheat
- Production potential: exceptional (under technology intensive conditions).



### AGRONOMIC CHARACTERISTICS

- Optimum sowing period 25.09 - 25.10
- Medium sized variety
- Maturity group: semi-divided
- Resistent to winter
- Excellent twinning ability
- Sowing norm 370-420 bg/mp;
- MMB: high;
- Trop results in international test network



### DISEASE RESISTANCE

Good resistance to:

- Powdery mildew (*Blumeria graminis*)
- Helminthosporiosis
- Septoria (*Septoria tritici*)



### QUALITATIVE INDICATORS

- Superior baking qualities;
- Protein: over 12.5 %;
- Gluten: 26 - 27%
- Grain hardness: medium-hard;
- MH: 80 - 86 kg/hl
- Hagberg index: over 380;
- Zeleny index: 45 - 55 ml
- W (at 11% protein): 140 - 190
- P/L (at 11% protein) 1.00 - 1.90



## EUCLIDE

**SEMITARDIVE THAT AMAZES  
IN THE BUNCH!**



### ADVANTAGES

- Autumn wheat varieties with good yield potential;
- Stable yield;
- Wheat with good milling and baking characteristics, excellent for biscuit production;
- High ecological plasticity;
- Production potential: high.



### AGRONOMIC CHARACTERISTICS

- Medium sized, very winter hardy and fall resistant;
- Maturity group: semi-late;
- Optimum sowing period: 25.09 - 25.10;
- Sowing standard: medium 350 - 450 bg/sqm;
- MMB: average;
- Strong twinning.



### DISEASE RESISTANCE

**Highly resistant to:**

- Powdery mildew (*Blumeria graminis*)

**Medium resistance to:**

- Fusarium
- Rust (*Puccinia*)



### QUALITATIVE INDICATORS

- Protein: more than 12 %;
- Gluten: 20 - 30 %;
- Grain hardness: medium-hard;
- MH: 70 - 73 kg/hl
- Zeleny index: 25 - 40 ml
- W (at 11% protein): 180 - 235
- P/L (at 12 % protein): 0.70 - 1.30



## ORTOLAN

EXCELLENT IN LAN!



### ADVANTAGES

- Autumn wheat varieties with stable yield;  
Environmental plasticity: good;
- Production potential: very good.



### AGRONOMIC CHARACTERISTICS

- Medium sized ear;
- Maturity group: semi-mature
- Resistant to winter
- Optimum sowing period: 25.09 - 25.10.
- Sowing norm: 420 - 470 bg/mp
- MMB: medium.



### DISEASE RESISTANCE

Highly resistant to:

- Powdery mildew (*Blumeria graminis*)
- Brown rust (*Puccinia recondita*)
- Septoria (*Septoria tritici*)
- Yellow rust (*Puccinia striiformis*)



### QUALITATIVE INDICATORS

- Protein: 12.7 %;
- Gluten: 27%;
- Grain hardness: medium-hard;
- MH: 77 - 79 kg/hl
- Hagberg index: 350;
- Zeleny Index: 50 - 52 ml;
- W (at 11% protein) :
- P/L (at 11% protein) : 0.30 - 0.60



## WINNER

**THIS IS WHAT A CHAMPION  
LOOKS LIKE!**



### ADVANTAGES

- Autumn wheat varieties with good yield potential;
- Stable yield;
- Superior bread wheat;
- Production potential: very good.



### AGRONOMIC CHARACTERISTICS

- Small to medium sized ear;
- Maturity group: medium;
- Hardy to winter
- Optimum sowing period:  
25.09 - 25.10;
- Capacity for twinning: high;
- Sowing norm: 380-430 bg/mp.
- MMB: medium.



### DISEASE RESISTANCE

**Highly resistant to:**

- Brown rust (*Puccinia recondita*)
- Septoria tritici (*Septoria tritici*)
- Yellow rust (*Puccinia striiformis*)

**Good resistance to:**

- Blight (*Blumeria/ Erysiphe graminis*)



### QUALITATIVE INDICATORS

- Protein: 12 %;
- Gluten: 26 - 27%;
- Grain hardness: medium-hard;
- MH: over 81 kg/hl
- Hagberg index: over 350;
- Zeleny index: 55 ml
- W (at 11.5 % protein): 210
- P/L (at 11.5 % protein): 0.90 - 1.00



## FRENETIC

**FRENETIC CALLS IT,  
FRENETIC SHOWS IT,  
FRENETIC PRODUCES IT!**



### ADVANTAGES

- Early wheat varieties with good production potential and stable yield;
- High ecological plasticity
- Production potential: very high;
- Excellent milling characteristics and superior baking properties.



### AGRONOMIC CHARACTERISTICS

- Medium sized ear variety with strong stem;
- Maturity group: early;
- Highly winter hardy and fall hardy;
- Optimum sowing period: 25.09 - 25.10.
- Sowing norm: 370-420 bg/mp;
- Excellent twinning ability;
- MMB: medium



### DISEASE RESISTANCE

**Highly resistant to:**

- Powdery mildew (*Blumeria graminis*)
- Rust (*Puccinia*)
- Fusariosis (*Fusarium*)



### QUALITATIVE INDICATORS

- Protein: over 12.5%;
- Gluten: 28 - 30%;
- Grain hardness: medium-hard;
- MH: 77 - 80 kg/hl
- Hagberg index: over 370;
- Zeleny index: 50 - 55 ml
- W (at 11% protein): 270
- P/L (at 11% protein): 0.90 - 1.10

## MUTIC

SMALL AND FABULOUS IN EAR!



### ADVANTAGES

- Autumn wheat varieties with good production potential and stable yield;
- Bread wheat;
- Production potential: good.



### AGRONOMIC CHARACTERISTICS

- Medium sized variety;
- Maturity group: semi-mature;
- Very winter hardy;  
Optimum sowing period: 25.09 - 25.10;
- Sowing norm: 400-450 bg/mp;
- MMB: low to medium.



### DISEASE RESISTANCE

Highly resistant to:

- Powdery mildew (*Blumeria graminis*)
- Helminthosporiosis
- Septoria (*Septoria tritici*)
- Yellow rust (*Puccinia striiformis*)



### QUALITATIVE INDICATORS

- Protein: 12.5%;
- Gluten: 27 - 28 %;
- Grain hardness: medium-hard;
- MH: 79 - 83 kg/hl
- Hagberg index: 380;
- Zeleny Index: 30 - 40 ml
- W (at 11% protein) : 125 - 220
- P/L (at 11% protein) : 0.50 - 1.10





## CONCRET

CONCRETE IN THE  
FIELD, CONCRETE IN  
PRODUCTION



### ADVANTAGES

- Autumn wheat with high yield potential;
- Environmental plasticity: good;
- Production potential: high;
- Fall resistant.



### AGRONOMIC CHARACTERISTICS

- Ear variety, small-sized;
- Maturity group: late;
- Winter hardy;
- Optimum sowing period:  
15.09. - 15.10;
- Sowing norm: 400-450 bg/mp
- MMB: medium



### DISEASE RESISTANCE

Highly resistant to:

- Powdery mildew (*Blumeria graminis*)
- Helminthosporiosis (*Drechslera tritici-repentis*)
- Septoria (*Septoria tritici*)



### QUALITATIVE INDICATORS

- Protein: 12 - 12.5%;
- Gluten: 25 - 27% ;
- Grain hardness: medium-hard;
- MH: 72 - 75 kg/hl
- Hagberg index: over 360;
- Zeleny Index: 40 - 50 ml
- W (at 11% protein) : 170 - 200
- P/L (at 11% protein) : 1.10 - 1.20

## MULTIE

YOU WILL THANK HIM!



### ADVANTAGES

- Autumn barley on 6 rows;
- Suitable for both early and late sowing;
- Disease resistant;
- Excellent yield potential.



### AGRONOMIC CHARACTERISTICS

- Winter and fall resistant
- Maturity group: semi-mature;
- High twinning capacity;
- Sowing rate: 400-450 kg/ha;
- Plant height: medium-high;
- MMB: high



### DISEASE RESISTANCE

Highly resistant to:

- Powdery mildew (*Blumeria graminis*)
- Helminthosporiosis (*Drechslera tritici-repentis*)
- Leaf blight (*Helmitosporiosis*);
- Mosaic virus and wilt;
- Septoria of ears.



### QUALITY PARAMETERS

- Outstanding productivity;
- High protein content;
- High hectolitre mass.



# LAUREATE

**THE WINNER IN  
PRODUCTION**



## ADVANTAGES

- Two-row malting barley variety;
- Excellent production potential and stable yield;
- Used in the malting industry, resulting in a quality beer.



## AGRONOMIC CHARACTERISTICS

- Medium sized;
- Very high winter and fall hardiness
- Maturity group: semi-mature;
- Optimum sowing period:  
10.02-10.03 (spring); 20.10-20.11 (autumn).
- Sowing norm: 350-450 bg/mp;
- Excellent uniformity.



## DISEASE RESISTANCE

**Good resistance to most diseases:**

- Powdery mildew (*Blumeria graminis*)
- Leaf blight (*Helmitosporiosis*)
- Rust (*Puccinia*);
- *Rychosporium*;
- *Ramularia*.



## QUALITY PARAMETERS

- Low protein and high starch content;
- Size: excellent (80-90% >2.5mm);





# BALLTRAP

A PEAS GOING AT A RUN!



### ADVANTAGES

- The variety is winter hardy and has a rigorous growth in spring.
- High protein content.
- High production potential.



### AGRONOMIC CHARACTERISTICS

- Variety with determinate growth.
- Maturity group: semi-mature;
- Sowing period: October - November;
- Density at sowing: 80-130 bg/sqm;
- Plant height: medium.
- Resistance to bending and falling: high.
- Grain colour: yellow.



### QUALITY PARAMETERS

- Protein content: high
- Production potential: high
- MMB: medium





# ANGELLUS

---

**AND THE ANGELS HAVE THEIR  
DEMON!**



## ADVANTAGES

- Protein content: high
  - Production potential: high
  - MMB: medium
- 



## AGRONOMIC CHARACTERISTICS

- Variety with determinate growth;
  - Maturity group:  
semi-late to semi-early;
  - Sowing period: 10.02 - 10.03  
depending on soil and climate
  - Density at sowing: 65-90 b.g./m<sup>2</sup>
  - Plant height: medium;
  - Resistance to bending and falling;
  - Grain colour: yellow
- 



## QUALITY PARAMETERS

- Very high protein content.
  - High production potential.
  - MMB: medium to high
- 



# JAVLO

---

**DO NOT FALL UNDER THE SIEGE  
OF THE EASERS!**



### ADVANTAGES

- The variety is semi-early;
- The stem facilitates harvesting;
- High production potential.



### AGRONOMIC CHARACTERISTICS

- Variety with determinate growth;
- Maturity group: semi-mature;
- Sowing period: 10.02 - 10.03
- Density at sowing: 65-90 bg/sqm
- Plant height: medium;
- Resistance to bending and falling;
- Grain colour: yellow.



### QUALITY PARAMETERS

- Protein content: high.
- High to very high yield.
- MMB: medium to high.





## BETTY

---

**STABLE AND HEAVY!**



### ADVANTAGES

- *Stable yield;*
  - *NON-GMO;*
  - *Maturity group: 00-000*
  - *Excellent production potential*
- 



### AGRONOMIC CHARACTERISTICS

- *Medium sized variety, excellent fall resistance.*
  - *Optimum sowing period: 20.04 (can be sown as a main and/or successive crop)*
  - *Sowing rate: 50-60 bg/cm*
  - *Excellent uniformity.*
- 



### QUALITY PARAMETERS

- *Outstanding productivity;*
  - *Increased disease tolerance.*
  - *Protein content: 39 - 41 %.*
  - *Oil content: 21 - 22*
- 



## AVRIL

---

**THE PROTEIN FROM THE FIELD!**



### ADVANTAGES

- *Maturity group: 01 - I*
- *Semi-seasonal variety with excellent production potential and stable yield;*
- *The crop matures uniformly, facilitating harvesting.*



### AGRONOMIC CHARACTERISTICS

- *Medium to tall, with purple color; grains have yellow seeds;*
- *Optimum sowing period: until*
- *20.04 - 20.05; Recommended density: 45 - 50 bg/mp;*
- *High disease tolerance.*



### QUALITY PARAMETERS

- *Outstanding productivity;*
- *Protein content: 41 %*
- *Oil content: 21 - 22 %*



# OMEGALIN

**FULL OF OMEGA 3!**



## ADVANTAGES

- High production yield
- Uses in industry for food and animal feed;
- Very good resistance to most important diseases;
- Very high oil and Omega 3 content;
- Excellent plant in crop rotation.



## AGRONOMIC CHARACTERISTICS

- Brown seed;
- Plant height: medium;
- Sowing period: 15.02 - 15.03;
- Sowing rate: 50 - 60 kg/ha;
- Earliness at sowing: semi-early;
- Earliness at harvest: semi-early;
- Fall resistance: high;



## DISEASE RESISTANCE

- Powdery mildew - very good strength
- Fusarium - good strength



## QUALITY PARAMETERS

- Oil content: 41 - 45% very high;
- Omega 3 content: 63 - 66% very high.



## ATTILA

**PURPLE FLOWERS WITH  
THE RIGHT PRODUCTION!**



### ADVANTAGES

- High production yield;
- Flax variety sown: autumn after 20 September;
- Winter hardiness;
- Uses in human nutrition;
- High oil and Omega 3 content



### AGRONOMIC CHARACTERISTICS

- Plant height: medium;
- Sowing: after 20 September
- Sowing density: 430 bg/sqm
- Earliness at sowing: June;
- Earliness at maturity: July;
- Fall resistance: high;
- During winter, plants should be between 5 - 10 cm in size.



### DISEASE RESISTANCE

- Powdery mildew- very good resistance
- Fusariosis - good resistance



### QUALITY PARAMETERS

- MMB: 6,5 gr.
- Oil content: 41 - 45%
- Omega 3 content: 63 - 66%



# AXE MICRO

## A GREAT START WITH A MICRO EXPENSE

N	P <sub>2</sub> O <sub>5</sub>	K <sub>2</sub> O	MgO	SO <sub>3</sub>	CaO
56	255		60	120	
B	Cu	Fe	Mn	Mo	Zn
0.5	0.14	0.25	0.5	0.05	0.4

**pH-a**  
Activ pH Complex

Fe chelat de tip EDTA



### SPECIFICATIONS

- Starter foliar fertilizer for the early stages of vegetation.  
*This plant-wide action results in improved photosynthesis and increased mineral uptake in the root system.*
- Balanced mix of nutrients specifically for agricultural crops.



### CHARACTERISTICS

- Urea Nitrogen, Penta Phosphorus Oxide and Magnesium Oxide, together with essential trace elements, help the crop grow and develop, contributing to a rich harvest.
- The balance of mineral elements is similar to that present in plant serum. Most of the trace elements present are in chelated form, which increases their uptake and circulation in the plant.



### ADVANTAGES

**Acidifying base of active pH = Acidifying and compatibilising product of natural origin:**

- Optimal and fast nutrient absorption: almost 100%;
- Prevents deposition of calcium salts;
- Very good compatibility with most pesticides;
- Acidifies and stabilizes pH (buffering capacity);
- Provides greater flexibility in application by keeping nutrients soluble in solution longer.



# AXE MULTI

## MULTI FOOD FOR MULTI HARVESTING

N	P <sub>2</sub> O <sub>5</sub>	K <sub>2</sub> O	MgO	SO <sub>3</sub>	CaO
50			260		
B	Cu	Fe	Mn	Mo	Zn
50			130		80

**LS**  
Lignosulfonati

Lignosulfonati



### SPECIFICATIONS

- It has a perfectly balanced formula in which the proportion of nutrients present is specially designed to help crops grow harmoniously.
- Prevents nutrient deficiencies of Copper, Manganese, Magnesium, Zinc and Nitrogen.
- Avoid deficiencies or blockages responsible for yield losses and crop unevenness.



### CHARACTERISTICS

- Copper plays an enzymatic role in photosynthesis, protein and lignin synthesis. Manganese plays a role in enzyme activation, chlorine synthesis.
- Sulphur is a component of proteins, plays an enzymatic role and in photosynthesis.
- Zinc stimulates the synthesis of growth hormones and proteins. It is involved in the production of chlorophyll and in carbohydrate metabolism.
- It supports the transport of Calcium within plants. It is necessary in the processes of cell elongation, leaf and internode growth and berry formation.



### ADVANTAGES

#### Concentrated suspension:

- Has long-lasting action due to slow-release salts - the component elements are soluble, gradually released and absorbed into the plant at leaf level;
- One dose provides the necessary amount of nutrients to cover the needs of the crop.
- The product is non-aggressive, there is no risk of leaf burn even at higher concentrations.
- Lignosulphonates: organic compounds obtained from wood (lignin);
- Natural Chelant: forms stable and soluble compounds with metal ions (Fe, Cu, Zn, Mn).
- Natural additive: hygroscopic, adhesive and humectant.





## AXE OIL

**DESIGNED FOR THE  
NEEDS OF YOUR  
OILSEEDS**

N	P <sub>2</sub> O <sub>5</sub>	K <sub>2</sub> O	MgO	SO <sub>3</sub>	CaO
58			15	204	44
B	Cu	Fe	Mn	Mo	Zn
44			80	0.26	



### SPECIFICATIONS

- Designed to meet the needs of Rapeseed, Sugar Beet, Sunflower Lucerne, Peas, Soybeans and Flax plants.
- Thanks to its balanced formula, specially designed for the needs of oilseed crops, it prevents deficiencies in these crops.
- In the fertiliser production process carefully selected raw materials of high quality and balanced proportions have been used to ensure 100% plant uptake through the foliar system and efficient application in all situations.



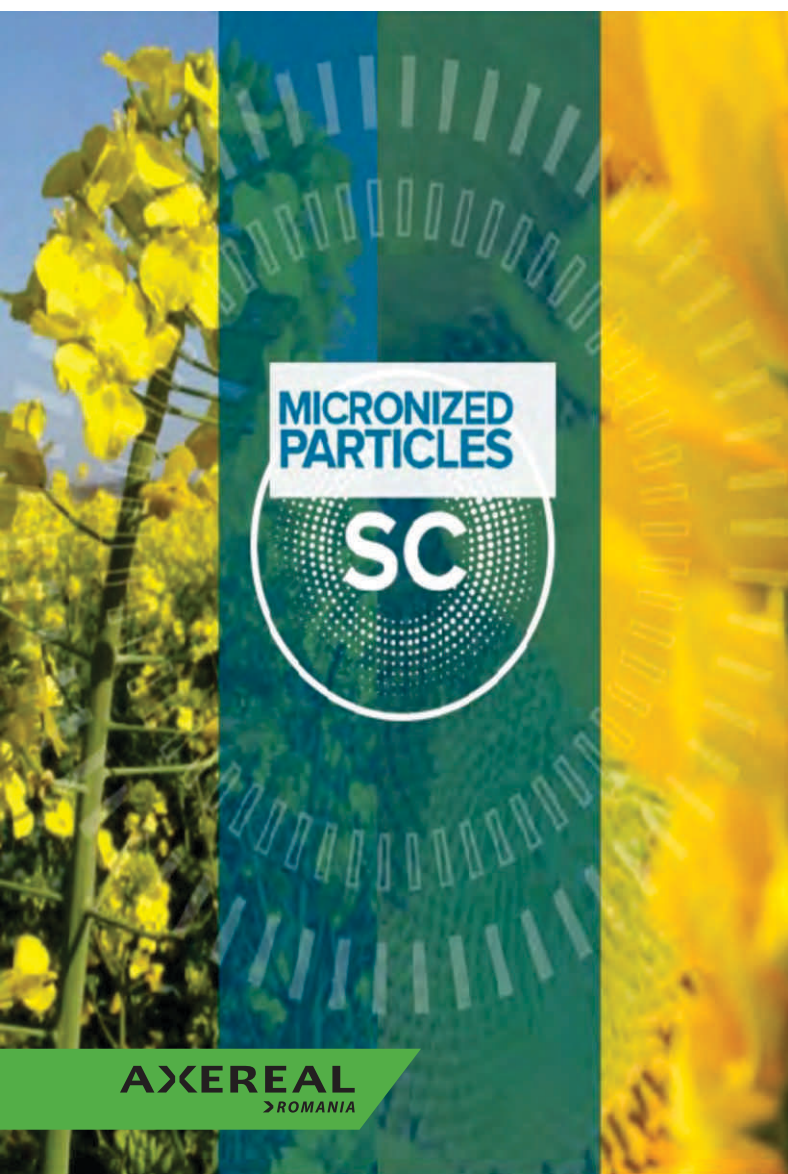
### CHARACTERISTICS

- Magnesium plays a role in photosynthesis, carbohydrate and lipid synthesis;
- Boron helps increase pollen viability and fruit formation, plays a role in glucose movement in the plant, in protein synthesis, in auxin utilisation by the plant;
- Molybdenum helps in protein synthesis and contributes to knot formation; Manganese plays a role in enzyme activation, protein synthesis;
- Sulphur plays a role in enzymes, photosynthesis and protein synthesis



### ADVANTAGES

- Sustainability of action: Intensification of inflorescence, increase of fructification and pollen viability.
- Contributes to the development of knotweed in legumes. Increased protein or oil content.
- Slow release of mineral salts: ensures balanced nutrition over a longer period of time.
- The product is non-aggressive: Used under optimal temperature and hygroscopic conditions there is no risk of burning the foliar apparatus even when using the maximum recommended dose.
- High miscibility and low water consumption/ha: the product is composed of natural glue to increase the quality of the spray and avoid the solution running off the leaves.





# AXERREAL

> ROMANIA

## Cosmin CARACUDA

Representative Ilfov, Giurgiu, Teleorman  
(+4) 0743 0179 181  
cosmin.caracuda@axereal.com

## Alin ILIE

Representative Olt, Dolj  
(+4) 0753 114 571  
ilie.alin@axereal.com

## Iulian NECULAU

Representative Buzău, Galați, Brăila  
(+4) 0753 114 574  
neculau.iulian@axereal.com

## Marian CIOROIU

Representative Constanta, Tulcea  
(+4) 0765 175 573  
marian.cioroiu@axereal.com

## Raul BUKFEJES

Representative Arad, Bihor  
(+4) 0753 114 576  
raul.bukfejes@axereal.com

## Cristian OPRESCU

Representative Arad, Bihor  
(+4) 0753 114 573  
cristian.oprescu@axereal.com

## IALOMIȚA-CĂLĂRAȘI

Local representative  
(+4) 0787 517 315  
office.romania@axereal.com

## Darian SAVU

Representative Timiș  
(+4) 0743 019 028  
darian.savu@axereal.com

## AXERREAL ROMANIA

Șos. Gheorghe Ionescu Sisești 260A

Sector 1, Bucharest, Romania

E-mail: [office.romania@axereal.com](mailto:office.romania@axereal.com)

Web: [www.axereal.ro](http://www.axereal.ro)

Facebook: "Axereal Romania"